



# REIMAGINING HEALTH IN CITIES

## Challenges and New Directions

An urban health symposium hosted by Drexel University  
Dornsife School of Public Health.

**SEPTEMBER 5-6, 2019**  
**PHILADELPHIA, PA**



DREXEL UNIVERSITY  
**Dornsife**  
School of Public Health

## WELCOME!

It is increasingly clear that the future of humanity lies largely in cities. Urbanization has increased rapidly worldwide and is expected to continue to grow. Today's cities and the cities of the future face many challenges, including climate change, rising inequality, and health disparities. Yet urban environments offer opportunities for the development of innovative programs and policies that can improve population health.

Health issues faced by city residents have grown beyond traditional urban health concerns – infectious diseases and toxic environmental exposures – to include chronic diseases associated with poor diets, sedentary life styles, and physical and mental health issues that are linked to violence, poverty, unemployment, income insecurity and poor working conditions. Addressing these health determinants is key not only to improve population health overall but also to ensure the moral imperative of health as a human right.

At the Dornsife School of Public Health, improving health in urban areas and eliminating health disparities in urban communities is at the core of our mission. We are thrilled to welcome researchers, practitioners, policy makers and community members to the third Dornsife School of Public Health Symposium. It is our hope that you will engage with the speakers and with each other to reflect critically on the links between urban environments and health, identify new opportunities for research and, most importantly, consider implications for community action and policy.

The Urban Health Symposium, Reimagining Health in Cities: Challenges and New Directions, will bring together researchers, practitioners, and policy makers to spark conversations and new ideas about how to turn evidence into action, share creative methods and solutions, and stimulate debate among participants from diverse perspectives and fields. This two-day symposium will feature a plethora of sessions, a poster session and reception that will cover a broad range of research topics related to urban health and provide networking opportunities to discuss the themes of the symposium.

Welcome to Philadelphia and to the Dornsife School of Public Health!

Ana V. Diez Roux, MD, PhD, MPH  
Dean and Distinguished Professor of Epidemiology  
Director, Urban Health Collaborative  
Dornsife School of Public Health, Drexel University

Gina S. Lovasi, PhD, MPH  
Dornsife Associate Professor of Urban Health  
Co-Director, Urban Health Collaborative  
Dornsife School of Public Health, Drexel University

## THURSDAY, SEPTEMBER 5

8:00-8:30 — Registration, Coffee and Breakfast

8:30-8:45 — Welcome and Overview

Introduction: Ana V. Diez Roux, MD, PhD, MPH, Dean and Distinguished University Professor of Epidemiology, Director, Urban Health Collaborative, Drexel University

8:45-10:30 — Session I: Addressing Urban Health Crises and Disaster Preparedness: The Perspective of Urban Health Leaders

Moderator: Jerry Fagliano, PhD, MPH, Associate Clinical Professor and Chair, Environmental and Occupational Health, Dornsife School of Public Health, Drexel University

**Miami Dade County: Crossroads of the America's: Public Health Preparedness Challenges and Approaches**

Lillian Rivera, PhD, MSN, BSN, Retired Administrator and Health Officer, Florida Department of Health in Miami-Dade County

**Public Health Response in California's Camp Fire**

Andrew Miller, MD, Public Health Officer, Butte County Public Health Department, California

**TBD**

Nestor Saul Hernandez Milan, MD, Director of Health Services, Institute of Public Health at the State of Baja California (ISESALUD)

**Bouncing Forward - Boston Strong: Building Resilient Communities After the Marathon Bombing**

Monica Valdes Lupi, JD, MPH, Executive Director, Boston Public Health Commission

**Is Emergency/Disaster Preparedness Helping or Hindering Big Cities' Ability to Respond to "Routine" Urban Health Crises?**

Chrissie Juliano, MPP, Executive Director, Big Cities Health Coalition

Discussant: Brian C. Castrucci, DrPH, MA, President & Chief Executive Officer, de Beaumont Foundation

10:30-10:50 — Break

10:50-12:30 — Session II: Placed-Based Approaches to Health: From Rural to Urban Environments

Moderator: Usama Bilal, MD, PhD, MPH, Assistant Professor, Epidemiology and Biostatistics at the Urban Health Collaborative, Dornsife School of Public Health, Drexel University

**Addressing Social Isolation in a Rural Context**

Carrie Henning-Smith, PhD, MPH, MSW, Assistant Professor, Division of Health Policy and Management, University of Minnesota School of Public Health

**Regional Approaches to Improving the Food System**

Anne Palmer, MAIA, MA, Food Communities and Public Health Program Director, Center for a Livable Future, Johns Hopkins Bloomberg School of Public Health

**Inside, Outside, and Over There: Variability in Particulate Composition Across Space and Time**

Pete DeCarlo, PhD, Associate Professor, Civil, Architectural, and Environmental Engineering, Drexel University

**Pathways to Healthy Urban Living: Green Space and Active Transportation**

Mark Nieuwenhuijsen, PhD, Research Professor in Environmental Epidemiology, ISGlobal, Barcelona Institute for Global Health, Spain

Discussant: Kelly Henning, MD, Public Health Program Lead, Bloomberg Philanthropies

12:30-1:30 — Lunch (provided)

1:30-3:15 — Session III: Innovations in Data Collection and Analysis in Urban Health Research

Moderator: Brent Langellier, PhD, MA, Assistant Professor, Health Management and Policy, Dornsife School of Public Health, Drexel University

**Using Google Street View to Examine Associations between Built Environment Characteristics and U.S. Health Outcomes**

Quynh Nguyen, PhD, MSPH, Assistant Professor, Epidemiology and Biostatistics, University of Maryland

**Global Problems, Local Solutions: Using Climate and Health Research to Inform Community Resilience Policy**

Jaime Madrigano, ScD, MPH, Associate Policy Researcher, RAND Corporation

**Examining Social Susceptibility to Air Pollution in Urban Epidemiology**

Jane Clougherty, MSC, ScD, Associate Professor, Department of Environmental and Occupational Health, Dornsife School of Public Health, Drexel University

**The Microbiome and Cardiometabolic Disease: Current Concepts and the Potential for Urban Environments to Shape the Human**

Ryan Demmer, PhD, MPH, Associate Professor, Division of Epidemiology and Community Health, University of Minnesota School of Public Health, Co-Director, Epidemiology and Population Health Summer Institute, Columbia University

Discussant: Raynard Washington, PhD, MPH, Chief Epidemiologist, Philadelphia Department of Public Health

3:15-3:30 — Break

3:30-5:30 — Poster Session & Evening Reception

Please join us in the 1st Floor Lobby and the 3rd Floor Atrium of the Bossone Research Center, 3140 Market Street, Philadelphia, PA 19104.

8:00-8:30 — Registration, Coffee and Breakfast

8:30-9:30 — Session IV: Keynote Speaker

**Policies and Politics in Urban Health**

Thomas Farley, MD, MPH, Health Commissioner, City of Philadelphia

9:30-11:00 — Session V: Urban Design and Action Strategies to Improve Health

Moderator: Diana Nicholas, NCIDQ, AIA, NCARB, LEED, GA, Director MS Design Research, Antoinette Westphal College of Media Arts & Design, Drexel University

**Shaping Space for Healthy, Engaged Communities**

Joanna Frank, President and CEO, Center for Active Design

**Designing Cities for the Age of Extreme Heat**

Adam Freed, MUP, Principal, Bloomberg Associates

**The New Role of Government as an Engine for Health and Well-being Production**

Anita Chandra, DrPH, MPH, Vice President and Director, RAND Social Economic Well-Being, RAND Corporation

**Urban Design and Health: From Insights to Strategies**

Mark Stevenson, PhD, Professor of Urban Transport and Public Health, University of Melbourne

Discussant: Ira Goldstein, PhD, President, Policy Solutions, Reinvestment Fund

11:00-11:15 — Break

11:15-12:30 — Session VI: Urbanization, Migration, and Displacement

Moderator: Joseph Amon, PhD, MSPH, Clinical Professor of Community Health and Prevention and Director of the Office of Global Health, Dornsife School of Public Health, Drexel University

**Sea-level Rise and Human Immigration in the United States**

Matthew Hauer, PhD, MS, Assistant Professor, Department of Sociology, College of Social Sciences and Public Policy, Florida State University

**TBD**

Ana Martinez-Donate, PhD, Associate Professor, Department of Community Health and Prevention, Dornsife School of Public Health, Drexel University

**Latino Communities, Health, and Acculturation**

Ana Abraido-Lanza, PhD, MA, Vice Dean, College of Global Public Health, Professor of Social and Behavioral Sciences, New York University

**TBD**

Catherine Kyobutungi, PhD, MS, Senior Research Scientist and Director of Research, African Population and Health Research Center

Discussant: Emilio A Parrado, PhD, Professor of Sociology and Chair Department of Sociology

12:30-12:35 — Closing Remarks

Gina S. Lovasi, PhD, MPH, Dornsife Associate Professor of Urban Health, Co-Director, Urban Health Collaborative, Drexel University

**Ana V. Diez Roux, MD, PhD, MPH**

Ana Diez Roux is dean of the Dornsife School of Public Health at Drexel University and director of the Urban Health Collaborative. She is internationally known for her research on the social determinants of population health and the study of how neighborhoods affect health. Her work on neighborhood health effects has been highly influential in the policy debate on population health and its determinants. Diez Roux has served on numerous boards and advisory committees relevant to urban health including most recently the Clean Air Scientific Advisory Committee (CASAC) of the Environmental Protection Agency (as Chair) and the Committee on Health and Wellbeing in the Changing Urban Environment of the International Council for Science. She currently serves as principal investigator of the SALURBAL (Urban Health in Latin America) project, an international research collaboration on urbanization and health funded by the Wellcome Trust. She was awarded the Wade Hampton Frost Award for her contributions to public health by the American Public Health Association and is an elected member of the American Epidemiological Society, the Academy of Behavioral Medicine Research, and the National Academy of Medicine.



**Jerry Fagliano, PhD, MPH**

Jerry Fagliano, PhD, MPH, is an associate clinical professor and the chair of the Department of Environmental and Occupational Health. Before coming to Drexel in September 2015, Fagliano spent 30 years in public health practice at the New Jersey Department of Health. Fagliano earned his PhD in occupational and environmental epidemiology from Johns Hopkins University in 1998, and his MPH in environmental health from Yale University in 1985. He was chair of the Environment Section of the American Public Health Association and served on the APHA Science Board and Governing Council. He has been a member of expert panels convened by the Centers for Disease Control and Prevention, Agency for Toxic Substances and Disease Registry, National Academy of Sciences, and U.S. Environmental Protection Agency. He was entered into the Public Service Honor Roll by the Association of Yale Alumni in Public Health and received the Distinguished Service Award from the Environment Section of APHA.



**Lillian Rivera, PhD, MSN, BSN**

With her many years as a public health nurse and administrator, Lillian Rivera, PhD, MSN, BSN, is truly an advocate for improving the public health system. Rivera is the recently retired administrator and health officer of the nationally accredited Florida Department of Health in Miami-Dade County, a large urban health department that serves 2.7 million residents and 10 million visitors annually. Rivera has served the profession for more than 30 years and earned dozens of awards that recognize her extraordinary leadership and achievements. Under her leadership, the Florida Department of Health in Miami-Dade County is the only organization to have won the Governor's Sterling Award for Significant Improvement and Performance Excellence three times and the Sustained Excellence Award twice. She is the first female, first Hispanic and first nurse to lead a county health department in the State of Florida. Rivera earned her BSN and MSN degrees from the University of Puerto Rico, holds a PhD in Health Administration and received an honorary Doctorate in Humane Letters in Behavioral Sciences.





### Andrew Miller, MD

Andrew Miller, MD is a board-certified family medicine physician who has been serving as the Butte County Health Officer since 2016. Miller obtained his medical degree from the University of San Diego in 1999. He has previously served as the medical director at Northern Valley Indian Health and was instrumental in facilitating the expansion of the Chico Children's Health Center and creation of the Chico Women's Health Center. Miller currently sits on the Board of Directors for the Butte-Glenn Medical Society and the California Conference of Local Health Officers and is a commissioner of First 5 Butte County.



### Nestor Saul Hernandez Milan, MD

Nestor Saul Hernandez Milan, MD, studied medicine at the Faculty of Medicine of the Autonomous University of San Luis Potosí, diplomat in Applied Epidemiology at Colegio de la Frontera Norte (COLEF) in Baja California, Diplomat in Epidemiology and Intermediate Biostatistics, Diplomat in Health Services Management and Diplomat in Economics from the Health at the National Autonomous University of Mexico. He completed a Master's degree in Public Health at the Autonomous University of San Luis Potosí.



### Monica Valdes Lupi, JD, MPH

Monica Valdes Lupi, JD, MPH, joined the Boston Public Health Commission (BPHC) as executive director in February 2016. Among other public health priorities, she is committed to advancing health equity and racial justice for all Bostonians and strengthening strategic collaborations across diverse stakeholders. As the executive director of the BPHC, the city's health department, Valdes Lupi manages a \$162M budget and leads 1,200 employees. In this role, her portfolio includes Boston Emergency Medical Services, school-based health centers, several substance abuse treatment facilities, and the largest homeless services program in New England. She worked previously at the Massachusetts League of Community Health Centers as a policy analyst where she coordinated the activities for the Boston Conference of Community Health Centers. She received her JD from the Dickinson School of Law, her MPH from the Boston University School of Public Health, and her BA from Bryn Mawr College.



### Chrissie Juliano, MPP

Chrissie Juliano, MPP, is the executive director of the Big Cities Health Coalition (BCHC). Juliano has been with BCHC since December 2014, when she started as the Deputy Director. BCHC is a forum for the leaders of America's largest metropolitan health departments to exchange strategies and jointly address issues to promote and protect the health and safety of the nearly 62 million people – or one in five – they serve. Prior to joining BCHC, Juliano was a senior program manager at RESOLVE where she developed and facilitated collaborative processes and consensus building projects among a variety of public health stakeholder groups. As part of the RESOLVE health team, she managed the Public Health Leadership Forum, funded by the Robert Wood Johnson Foundation, working with thought leaders to envision the "high achieving" health department in 2020 and shepherding a working group through the process of defining a set of foundational capabilities and areas that all health departments should possess. Juliano holds a Masters of Public Policy from the University of Chicago's Harris School and a Bachelor of Arts degree in Political Communication from the George Washington University School of Media and Public Affairs.



### Brian C. Castrucci, DrPH, MA

Brian C. Castrucci, DrPH, MA is the president and chief executive officer at the de Beaumont Foundation. In just six years, Castrucci has helped build the Foundation into a leading voice in health philanthropy and public health practice. An award-winning epidemiologist with 10 years of experience working in state and local health departments, he brings a unique perspective to the philanthropic sector that allows him to shape and implement visionary and practical initiatives and partnerships and bring together research and practice to improve public health. Under his leadership, the de Beaumont Foundation is advancing policy, building partnerships, and strengthening the public health system to create communities where people can achieve their best possible health. Among the projects he has spearheaded are CityHealth, the BUILD Health Challenge, and the Public Health Workforce Interests and Needs Survey (PH WINS). He is also an editor and contributing author to The Practical Playbook. Public Health. Primary Care. Together published by Oxford University Press in 2015.



### Usama Bilal, MD, PhD, MPH

Usama Bilal, MD, PhD, MPH is assistant research professor in the Urban Health Collaborative and the Department of Epidemiology & Biostatistics at Drexel's Dornsife School of Public Health. Bilal's primary research interest is the macrosocial determinants of health, with a specific interest in nutrition-related conditions and their upstream causes. Most of his work focuses on the role that city- and neighborhood-level dynamics have in generating disease, and the use of complexity methodologies to study the emergent properties of urban environments. In 2018, he was awarded a prestigious NIH Director's Early Independence Award (DP5) for a project entitled The Health Consequences of Urban Scaling. He was previously a postdoctoral research fellow with the Urban Health Collaborative. His website, with information on publications and presentations, is: [www.usamabilal.info](http://www.usamabilal.info).



### Carrie Henning-Smith, PhD, MPH, MSW

Carrie Henning-Smith, PhD, MPH, MSW is assistant professor in the Division of Health Policy and Management at University of Minnesota School of Public Health. Henning-Smith's research focuses on aging, disability, housing and living arrangements, disparities in physical and mental health outcomes, access to care, and long-term services and supports. She is especially interested in making connections between the social determinants of health and policy interventions to improve the quality of lives of older adults and individuals with disabilities. She has worked as a research assistant and an Interdisciplinary Fellow with the Minnesota Population Center, where she assisted with the production of the Integrated Health Interview Series, a harmonized version of the National Health Interview Series designed to make the data more accessible to inform research and policy. She is the Deputy Director of the Rural Health Research Center, a federally funded research center at the University of Minnesota.



### Anne Palmer, MAIA, MA

Anne Palmer, MAIA, MA, is the Food Communities and Public Health Program director at the Johns Hopkins Center for a Livable Future. Palmer directs the Food Policy Networks project, which seeks to improve the capacity of new and existing food policy councils and similar organizations to advance food system policies. As part of that project, she helps manage a database of resources on state and local food policy, moderates a listserv of 1,200+ members, and works directly with several food policy councils in the Chesapeake region and around the US. Prior to joining CLF, she worked for the Johns Hopkins Center for Communication Programs for 13 years developing and managing strategic communication plans and large-scale health communication campaigns and programs in Pakistan, Indonesia, the Philippines, India and Nepal.



### Pete DeCarlo, PhD

Pete DeCarlo, PhD is an Associate Professor with a joint appointment in the Department of Civil, Architectural, and Environmental Engineering, and the Department of Chemistry at Drexel University. DeCarlo heads the Drexel Air Resources Research Laboratory and is also an affiliate of the Urban Health Collaborative in the Dornsife School of Public Health at Drexel University and an adjunct member of the Center for Excellence in Environmental Toxicology (CEET) at the University of Pennsylvania. DeCarlo has a PhD in Atmospheric Science from the University of Colorado. Recently he has begun measuring the relationship between outdoor and indoor air pollutants, to understand transport of outdoor pollutants to the indoor environment, and to identify indoor specific sources such as residual tobacco smoke, and direct human emissions.



### Mark J. Nieuwenhuijsen, PhD

Mark J. Nieuwenhuijsen, PhD, is a research professor in Environmental Epidemiology at the Barcelona Institute of Global Health and Director of the Urban Planning, Environment and Health Initiative. Nieuwenhuijsen is a world leading expert in environmental exposure assessment, epidemiology, and health risk/impact assessment with a strong focus and interest on healthy urban living. He has edited three books on Exposure Assessment and on environmental epidemiology and has co-authored more than 300 papers published in peer reviewed journals.



### Kelly Henning, MD

Kelly Henning, MD has led the Bloomberg Philanthropies Public Health program since its inception in 2007. Henning is a medical doctor and epidemiologist trained in internal medicine, infectious diseases, and public health. She received her medical degree from Tufts University School of Medicine and was a fellow in Infectious Diseases at Memorial Sloan-Kettering Cancer Center. She completed Internal Medicine training at the University of Pennsylvania and received her epidemiology training in the Epidemic Intelligence Service at the United States Centers for Disease Control and Prevention.



### Brent A. Langellier, PhD, MA

Brent A. Langellier, PhD, MA, conducts research to understand and address drivers of health disparities, particularly those experienced by Latinos and other racial/ethnic minorities and the poor. Langellier's research has included analyses of primary and secondary observational data, multilevel intervention research in minority communities, and complex systems approaches. Currently, he uses complex systems methodologies (e.g. agent-based simulation models) to generate insights about the drivers of health disparities and to identify policy levers to address disparities.



### Quynh Nguyen, PhD, MSPH

Quynh Nguyen, PhD, MSPH is assistant professor of Epidemiology and Biostatistics at the University of Maryland School of Public Health. Nguyen is a social epidemiologist focusing on contextual and economic factors as they relate to health. She has extensive experience using numerous national and international population-based health surveys to examine social and economic predictors of health, and to quantify national and international patterns in health disparities. Her current research program focuses on creating and validating neighborhood indicators constructed from nontraditional Big Data sources such as social media data and Google Street View images. She is principal investigator of a K01 career development grant through the Big Data to Knowledge Initiative (BD2K) and a R01 from the National Library of Medicine to pursue this research program.



### Jaime Madrigano, ScD, MPH

Jaime Madrigano, ScD, MPH, is a policy researcher at the RAND Corporation, an affiliate faculty member at the Pardee RAND Graduate School, and a Professorial Lecturer at the George Washington University Milken Institute School of Public Health. Madrigano's research focuses on environmental and social determinants of health, including environmental pollution, extreme weather and disasters, and the built environment. She uses epidemiologic methods to inform policy and her research has been cited in multi-agency climate and health preparedness efforts within New York City. She is also interested in how people perceive risk as it relates to climate change, public health, and health care decision-making, and has conducted research on public health risk perception and communication. Prior to joining RAND, she completed a postdoctoral fellowship at Columbia University's Earth Institute and was an assistant professor at Rutgers University. She received her ScD in Epidemiology and Environmental health from the Harvard T.H. Chan School of Public Health.



### Jane Clougherty, ScD, MSc

Jane Clougherty, ScD, MSc, is an associate professor of Environmental and Occupational Health at the Dornsife School of Public Health. She has served as faculty at the University of Pittsburgh Graduate School of Public Health from 2010-2016. Clougherty completed her doctorate and post-doctoral training at the Harvard School of Public Health, and worked at New York City Department of Health and Mental Hygiene from 2008-2010. Clougherty's research focuses on the combined health effects of chronic social stressors and air pollution exposures, particularly in urban community settings. She is Principal Investigator on several epidemiological studies funded by the U.S Environmental Protection Agency (EPA), National Institutes of Health (NIH), and the Health Effects Institute (HEI) --including a current NIH-funded study using geographic information systems (GIS)-based methods to examine how social and environmental exposures may alter the efficacy of pharmaceutical interventions for asthma in clinical trials.





### Ryan Demmer, PhD, MPH

Ryan Demmer, PhD, MPH, is adjunct associate professor in epidemiology and co-director, Epidemiology and Population Health Summer Institute at Columbia University. Demmer is involved in several collaborative projects domestically and internationally and is currently principal investigator of an NIH funded cohort study: The Oral Infections Glucose Intolerance and Insulin Resistance Study (ORIGINS). The scientific aims of ORIGINS are to study the interplay between the subgingival microbiome and early risk for the development of type 2 diabetes. He is co-principal investigator of a project that is cataloguing Bloomberg era public health policy in New York City and evaluating the influence of the policy environment on chronic disease mortality and hospitalization rates. He also serves as co-investigator on several additional projects investigating novel risk factors and prediction models for cardiovascular disease, periodontal disease and congestive heart failure.



### Raynard Washington, PhD, MPH

Raynard Washington, PhD, MPH, is the chief epidemiologist at the Philadelphia Department of Public Health. In this role, Washington is responsible for collecting, analyzing, and interpreting data that provides actionable information on the health status of Philadelphia residents. He coordinates and provides guidance across the department and works internally and externally to enhance existing and establish new health surveillance systems. He also leads strategic initiatives, such as the Community Health Assessment and Community Health Improvement Plan. He earned his undergraduate and graduate degrees at the University of Pittsburgh.



### Thomas Farley, MD, MPH

From 2009 to 2014, Thomas Farley, MD, MPH, was the health commissioner for New York City and is the current health commissioner for the City of Philadelphia. In those years, he advocated for innovative public health policies, including making the city's parks and beaches smoke-free, prohibiting price discounting of cigarettes, raising the legal sales age of tobacco to 21, capping the portion size of sugary drinks sold in restaurants at 16 ounces, and restricting the burning of air-polluting fuels to heat buildings. Farley is coauthor of Prescription for a Healthy Nation (Beacon Press) with RAND Senior Scientist Deborah Cohen and author of Saving Gotham, A Billionaire Mayor, Activist Doctors, and the Fight for 8 Million Lives (W.W. Norton). Farley has a Bachelor of Arts in mathematics from Haverford College, a doctor of medicine (MD) from Tulane University School of Medicine, and a master of public health (MPH) in epidemiology from Tulane University School of Public Health and Tropical Medicine.



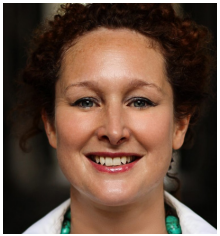
### Diana S. Nicholas, RA, AIA, NCARB

Speculative design research and tools for the design of healthy urban spaces in underserved communities with a focus on the residential interior are the focus of Nicholas' research and teaching. Nicholas has founded an informed design research laboratory Integral Living Research; this group creates environmentally driven solutions that work to reduce stress and support enhanced wellness for urban families. Nicholas examines how a wellness-through-environment approach can change housing at different scales with informed sustainable strategies, social determinants for health and trauma informed practice. The overall goal of Integral Living Research is to develop a range of customizable environment-driven tools and services to transform urban living spaces and access when they fail to promote optimal health for underserved families. Nicholas earned a Bachelor of Architecture from Carnegie Mellon University, she then received an MFA from the University of the Arts and is a registered architect. In addition, she recently received a certificate in Health and Design from Cornell University.



### Joanna Frank

Joanna Frank is the Founding President & CEO of the Center for Active Design (CfAD), where she advances design and development practices to foster healthy and engaged communities. CfAD is the operator for Fitwel, a unique building certification that positively impacts occupant health and productivity through design and operations. Prior to launching CfAD, Frank worked for the City of New York during the Bloomberg Administration, where her positions included Director of Active Design and Director of the NYC FRESH program. Frank has also developed sustainable, mixed-use residential buildings as a Partner at Bright City Development, LLC.



### Adam Freed, MUP

At Bloomberg Associates, Adam Freed, MUP, works with clients to craft and implement sustainability strategies and actions that go well beyond the environment — cutting costs, protecting health, increasing resilience, creating jobs and improving a city's image. Prior to joining Bloomberg Associates, Freed was the deputy managing director of The Nature Conservancy's Global Water Program, where he worked to help cities have safe, sustainable, and reliable water supplies. From 2008-2012, Freed served as deputy director of the New York City Mayor's Office of Long-Term Planning and Sustainability, overseeing the implementation of PlaNYC and related sustainability initiatives and developing the city's first climate resilience program. As part of PlaNYC, the City planted 750,000 trees, created more than 200 new community playgrounds, enacted the nation's most aggressive green buildings legislation, achieved the cleanest air quality in over 50 years, launched a \$2 billion green infrastructure program, and lowered its GHG emissions 19%. Freed is also a lecturer at Columbia University, a member of the NYC Water Board, and on the Board of ioby, a crowd-resourcing platform to support community-led improvement projects. He received his master's in Urban Planning from New York University and was a Mel King Community Fellow at MIT.



### Anita Chandra, DrPH, MPH

Prior to this role, Anita Chandra, DrPH, MPH, served as director of RAND Justice, Infrastructure and Environment and as director of RAND's Behavioral and Policy Sciences Department. She leads studies on civic well-being and urban planning; community resilience and long-term disaster recovery; effects of military deployment; health in all policies and advancing a culture of health; and child health and development. Throughout her career, Chandra has engaged government and nongovernmental partners to consider cross-sector solutions for improving community well-being and to build more robust systems and evaluation capacity. Chandra has also partnered with community organizations to conduct broad-scale health and environmental needs assessments, to examine the integration of health and human service systems, and to determine how to address the needs of historically marginalized populations in human service systems. Chandra earned a DrPH in population and family health sciences from the Johns Hopkins Bloomberg School of Public Health.



### Mark Stevenson, PhD, MPH

Mark Stevenson, PhD, MPH, has an appointment across the Melbourne Schools of Design, Engineering and Population and Global Health. Stevenson is a National Health and Medical Research Council (Australia) Research Fellow, an Honorary Professor in the Peking University Health Science Centre (China), an advisor for injury to the director general of the World Health Organization, an appointed member of the Coronial Council of Victoria and a board member of the International Council on Road Safety based in India. Stevenson is an Associate Editor on the leading journals in his respective field namely, Injury Prevention and Traffic Injury Prevention and on the editorial board of 3 other leading discipline-related journals. Stevenson has published over 220 peer-reviewed articles, books, book chapters and technical reports and procured more than \$31 million in competitive research funding including funding from the NHMRC, ARC and the US National Institutes of Health.



### Ira Goldstein, PhD

Ira Goldstein, PhD, is the president of policy solutions at Reinvestment Fund, a results-oriented, socially responsible community investment group. Goldstein has conducted detailed spatial and statistical analyses in many cities and regions across the US. Those studies are used by local government to craft policy responses and allocate scarce resources based on local conditions. He also has conducted studies of mortgage foreclosures and abusive lending practices. His work supported civil rights and consumer protection cases brought by federal, state and local governments. Goldstein also led efforts to evaluate the impact of various federal, state and local community development interventions, and the creation of Reinvestment Fund's approach to analyzing gaps in access to high-quality childcare. For more than 25 years, Goldstein has been a lecturer for the University of Pennsylvania's Urban Studies program. He instructs undergraduates and graduate students in research methods, statistics, and housing policy.



### Joseph Amon, PhD, MSPH

Joe Amon, PhD, MSPH, is the director of the Office of Global Health and Clinical Professor in the Department of Community Health and Prevention at the Drexel Dornsife School of Public Health. During his tenure at Human Rights Watch he founded programs on human rights and health, disability and the environment. Amon has also held visiting or adjunct academic appointments with Paris School of International Affairs (SciencesPo), Uniformed Services University of the Health Sciences, Princeton, Columbia, and Johns Hopkins Universities as well as the Institute for Advanced Studies (Princeton). Using quantitative, qualitative and legal/policy analysis, Amon has conducted research on how (and why) specific populations, and diseases, are neglected, and on the impact of political determinants, such as laws, and their enforcement, on health. This work has examined the impact of discrimination on access to prevention and treatment; censorship and the denial of health information; arbitrary detention; the "judicialization" of health; and the role of civil society in the response to infectious disease outbreaks and environmental health threats.



### Mathew Hauer, PhD, MS

Mathew Hauer, PhD, MS, studies the impacts of climate change on society. Recently, his research has focused on how migration induced by sea level rise could reshape the U.S. population distribution. The New York Times, National Geographic, Time Magazine, Popular Science, USA Today, and others have featured his research. Before coming to Florida State University, Hauer spent eight years directing the Applied Demography Program at the University of Georgia where he provided valuable demographic research to local, state, and federal governments.



### Ana Martinez-Donate, PhD

Ana Martinez-Donate, PhD, was trained in Health Psychology and received her PhD from Universidad Autónoma de Madrid, Spain, in 1999. Martinez-Donate completed post-graduate studies in Epidemiology at the National School of Public Health, Spain (2000) and received post-doctoral training at San Diego State University, focusing on health promotion, behavioral epidemiology, and community health. Martinez-Donate's work has focused primarily on Latino immigrants and other disadvantaged populations. She applies a social ecological framework to the analysis of behavioral and social determinants of population health and the development and evaluation of community-based interventions for disease prevention and health promotion.



### Ana F. Abraido-Lanza, PhD

Ana F. Abraido-Lanza, PhD, is the vice dean of the College of Global Public Health and Professor of Social and Behavioral Sciences NYU College of Global Public Health. Abraido-Lanza earned her BA in Psychology from New York University's Washington Square University College (now College of Arts and Sciences), and her PhD in Psychology from the Graduate School of the City University of New York. She also completed a post-doctoral training fellowship program in Psychiatric Epidemiology at Columbia University's Mailman School of Public Health. Her major publications on the Latino mortality paradox and on acculturation have contributed to national and international debates on the mental and physical health of Latinos specifically, and on general factors that influence immigrant health. Abraido-Lanza is serving on the Editorial Boards of Health Education and Behavior, the Annals of Behavioral Medicine, the International Journal of Behavioral Medicine, and Preventing Chronic Disease. She has served as a committee or Board member on numerous scientific, professional and non-profit organizations and groups, including (among others) the Hispanic Serving Health Professions Schools, the Community Task Force on Preventive Services of the Centers for Disease Control and Prevention, and several National Institutes of Health review groups.



### Catherine Kyobutungi, PhD, MS

Catherine Kyobutungi, PhD, MS, provides both management and technical advice to all the research programs at African Population and Health Research Center (APHRC), including ensuring that the research conducted at the Center is of the highest quality standards possible and it follows international best practices. Kyobutungi is and has been a principal investigator on several grants at the Center. She has been the PI on a project on cardiovascular disease epidemiology, one on service delivery for diabetes among poor urban residents and one testing a model of community-based cardiovascular disease prevention in the Nairobi slums. She is currently a PI on two multi-country projects. Kyobutungi is a medical doctor by training and has a Masters in Community Health and Health Management and a PhD in Epidemiology; both obtained from the University of Heidelberg, Germany.





## Emilio Parrado, PhD

Emilio Parrado's, PhD, research has migration as its central focus and its interaction with other demographic and social processes. Parrado's research falls into three broad categories: 1- The Hispanic population of the United States, especially issues of immigrant adaptation and new areas of migrant settlement; 2- International migration, with special emphasis on its determinants and consequences for sending and receiving regions including health and family outcomes; 3- Social and demographic change in Latin America, including social mobility and family behavior. Parrado has concentrated his efforts in studying the intersection of gender, migration, and health risks among Mexican and Honduran migrants in sending areas and receiving communities in the U.S. He uses a variety of advanced statistical methods for data analysis, and draws upon ethnographic and historical materials for contextualizing relationships and interpreting outcomes.



## Gina S. Lovasi, PhD, MPH

Gina S. Lovasi, PhD, MPH co-directs the Urban Health Collaborative at Drexel University, where she is the Dornsife Associate Professor of Urban Health. She studies the potential health implications of local contexts and policies outside of the health care sector (e.g., urban planning decisions, public transportation infrastructure, regulation and taxation of foods and food-related businesses). By supporting health in the social and physical contexts that people inhabit throughout their lives, multi-sectoral policy approaches can shape individual choices and corresponding chances for a healthy life. Yet, potential health benefits are often either ignored or given insufficient scrutiny. Even ostensibly health promoting measures may have unanticipated negative health effects that offset the anticipated health benefit. Much of her work is framed around understanding local environments can be changed to prevent cardiorespiratory problems and their risk factors (notably physical activity and excess body weight). However, since other outcomes may also be sensitive to the local environment, her research agenda is occasionally stretched to consider a wider set of health outcomes (ranging from vector-borne illness to cognitive and mental health outcomes).



## POSTER SESSION

### Posters on 1st floor.

#### Evaluating Interventions

1. "Secondhand Smoke (SHS) Incursions in Two NYC Subsidized Housing Settings: New York City Housing Authority (NYCHA) and Private Sector Buildings"

**Elle Anastasiou, BS**, Albert Tovar, BS, Emily Gill, BS, Melanie Baker, MPH, Katarzyna "Kasia" Wyka, PhD, Terry Gordon, PhD, Lorna E. Thorpe, PhD

Presenting author's affiliation: New York University School of Medicine

2. "An Innovative Rapid Rehousing Pilot to Reduce Homelessness in Urban Philadelphia"

**Sara Shuman, PhD**, Sandra Guillory, MSW

Presenting author's affiliation: La Salle University

3. "Evaluation of a Newly Implemented Community Based Stroke Education and Outreach Program"

**Justina Ferguson, DNP, MSN**

Presenting author's affiliation: Penn State Scranton

4. "Evaluating the health effects of urban upgrading interventions in informal settlements: a systematic review (2012-2018)"

**Rosie Mae Henson, MPH, PhD(c)**, Ana Ortigoza, MD, PhD, MS, Kevin Martinez, MD, Gina Lovasi, PhD, MS

Presenting author's affiliation: Dornsife School of Public Health

#### Place-Based Research and Initiatives

5. "Blight Surveillance for Public Health: Using 311 Data to Target Interventions"

**Jessica Athens, PhD, MS**, Nupur Chaudhury, MUP, MPH, Mark Zezza, PhD, MA, David Sandman, PhD, MPA

Presenting author's affiliation: New York State Health Foundation

6. "Population-Based Measures of Exposure to Violence Are Associated with Mental Health, While Proximal Violent Crime Incidents Are Not"

**Amy Carroll-Scott, PhD, MPH**, Samantha Rivera Joseph, MPH, Rennie Joshi, MPH

Presenting author's affiliation: Dornsife School of Public Health

7. "Feasibility of measuring adverse community experiences as indicators of community-level trauma: a systematic review"

**Samantha Rivera Joseph, MPH**, Randy Sell, ScD, Ana Martinez-Donate, PhD, Brent Langellier, PhD, MA, Amy Carroll-Scott, PhD, MPH, Yvonne Michael, ScD, SM

Presenting author's affiliation: Dornsife School of Public Health

8. "An Overview of the West Philly Promise Neighborhood Initiative"

**Erikka Gilliam, MS, MPH**, Amy Carroll-Scott, PhD, Félice Lê-Scherban, PhD, Kelley Traister, MSW, Maggie Beverly, MPH, Irene Headen, PhD, Matthew Jannetti, MSPPM, Andrew Stutzman, MS, Dai Meeks, Samantha Joseph, MPH, DrPH(c)

Presenting author's affiliation: Urban Health Collaborative, Dornsife School of Public Health

9. "Creating a comprehensive resource directory for children and families in West Philly Promise Neighborhood"

**Maggie Beverly, MPH**, Amy Carroll-Scott, PhD, Félice Lê-Scherban, PhD, Kelley Traister, MSW, Leah Lombardi, BS, Dai Meeks

Presenting author's affiliation: Urban Health Collaborative, Dornsife School of Public Health

## Place-Based Research and Initiatives, cont.,

10. "Map the Gap: Addressing Urban Trauma in Mantua, PA Via Human-Centered Design, Interdisciplinarity, and Mixed-Methods Translational Research"

**Samantha Stein**, Diana Nicholas, RA, AIA, NCARB, Yvonne Michael, ScD, SM, Kristin Giordano, MPH, Thanh My Nguyen

Presenting author's affiliation: University of Pennsylvania

11. "Surveillance of urban policy action related to social determinants of health at the city level"

**Jen Kolker, MPH**, Amy Confair, MPH, Katherine Castro, MPH(c), Amy Carroll-Scott, PhD, MPH

Presenting author's affiliation: Urban Health Collaborative, Dornsife School of Public Health

12. "The role of school segregation in child obesity disparities"

**Nuha Mahmood, BS**, Brisa Sánchez, PhD, Emma Sanchez-Vaznaugh, ScD, Mika Matsuzaki

Presenting author's affiliation: University of Michigan

13. "Understanding Menstrual Hygiene Management Among Adolescents in Indian Urban Slums"

**Tanya Dhingra, MPH**, Heather Murphy, PhD, PEng

Presenting author's affiliation: Temple University

## Built Environment

14. "A comparison of first-time Citi Bike members to New York City cyclists, 2013-2018"

**Aldo Crossa, MSc**, Kathleen H Reilly, PhD, Shu Meir Wang, PhD, Sze Yan Liu, PhD, Anne Krassner, MS, Sungwoo Lim, DrPH

Presenting author's affiliation: NYC Department of Health and Mental Hygiene

15. "Determinants of residential preferences related to built and social environments and concordance between neighborhood characteristics and preferences"

**Jingjing Li, PhD**, Amy Auchincloss, PhD, Daniel Rodriguez, PhD, Kari Moore, MS, Ana Diez Roux, PhD, Brisa Sanchez, PhD

Presenting author's affiliation: Urban Health Collaborative, Dornsife School of Public Health

16. "Field validation of two food outlet data sources used to characterize the food environments in New York City"

**Aldo Crossa, MSc**, Ryan Gardner-Cook, MA, Amarilis Cespedes, PhD, Sze Yan Liu, PhD, Sungwoo Lim, PhD, L. Hannah Gould, PhD

Presenting author's affiliation: New York City Department of Health and Mental Hygiene

17. "Characterizing Smoking-related Litter in Public Parks in Philadelphia"

**Russell McIntire, PhD, MPH**, Ashley Lipshaw, MPH(c)

Presenting author's affiliation: Thomas Jefferson University

18. "How do low-income ethnic families with young children use parks? Using latent class analysis to understand types of park use and family characteristics"

**Jing-Huei Huang**, Med, Myron Floyd, PhD, Oriol Marquet, PhD, Claudia Alberico, MS, Elizabeth Mazak, MS, J. Aaron Hipp, PhD

Presenting author's affiliation: North Carolina State University

19. Built environment and physical activity among youth: Findings from Mexico City"

**Tahmeed Tureen, BS**, Elizabeth FS Roberts, PhD, Martha M Tellez-Rojo, PhD, Brisa N Sanchez, PhD

Presenting author's affiliation: University of Michigan School of Public Health

## Posters on 3rd floor.

### Climate, Air Pollution, and Environmental Exposures

20. "Solutions at the nexus of Climate Change and Health for Cities"

**Debarati Majumdar Narayan, PhD**

Presenting author's affiliation: The Pew Charitable Trusts

21. "Understanding Hurricane María's Impact on Public Health in Puerto Rico"

**Mislael Valentín-Cortés, BA**, Dana Thomas, MPH

Presenting author's affiliation: University of Michigan School of Public Health

22. "Social Susceptibility to Multiple Air Pollutants in Cardiovascular Disease"

**Jane Clougherty, ScD, MSc**, Jamie Humphrey, PhD, MPH, Ellen Kinnee, MS, Laura Kubzansky, PhD, MPH, Colleen Reid, PhD, MPH, Leslie McClure; PhD, MS, Lucy Robinson; PhD, MA

Presenting author's affiliation: Environmental and Occupational Health, Drexel Dornsife School of Public Health

23. "Disentangling impacts of multiple nitrogen dioxide sources across Philadelphia"

**Sheila Tripathy, PhD**, Paige Williams, MPH, Lucia Lavalle, Leah Schinasi, PhD, Shannon Capps, PhD, Jane E. Clougherty, ScD

Presenting author's affiliation: Dornsife School of Public Health

24. "Effects of fine particulate matter on blood pressure and potential effect modifiers in Nepal"

**Rennie Joshi, MPH**, Yvonne Michael, ScD, SM

Presenting author's affiliation: Drexel University

25. "Differential food, water and animal exposures reported by Pennsylvania Salmonella and Campylobacter case-patients in urban and rural areas, 2011-2016."

**Erica Smith, PhD, MPH**, Esther Chernak, MD, MPH, Alison Evans, ScD

Presenting author's affiliation: Dornsife School of Public Health

### Changing Cities

26. "Trends in transit use, walking to transit, and ridesharing between 2009 and 2017 in the US and its major metropolitan areas"

**David Berrigan, PhD MPH**, Calvin Tribby, PhD MPH

Presenting author's affiliation: National Cancer Institute

27. "Changes in physical activity supportive environments and changes in small-area sociodemographic composition in US urban areas: a bi-directional analysis"

**Pedro Gullon, MD, PhD**, Usama Bilal, MD, PhD, MPH, Jana Hirsch, PhD, Andrew Rundle, PhD, Julia Díez, MsC, Philip Hurvitz, PhD, Insu Koh, PhD, Gina S. Lovasi, PhD

Presenting author's affiliation: Dornsife School of Public Health

28. "Aging in a Gentrifying Harlem"

**Saakshi Kakar, BS**, Mubarak Sanni, Isabella Greco, Justin McIntosh

Presenting author's affiliation: Wesleyan University

29. "Change in Prevalence of Metabolic Syndrome Among New York City Adults: New York City Health and Nutrition Examination Survey 2004 and 2013-14"

**Rania Kanchi, MPH**, Sharon Perlman, MPH, Bahman Tabaei, Adeiyewunmi Osinubi, Lorna Thorpe, PhD

Presenting author's affiliation: NYU Langone Health

30. "Changing Neighborhoods, Changing Health? An Ecological Analysis of Gentrification and Neighborhood Level Health - New York City, 2002-2018"

**Karen Alroy, DVM, MPH**, Sze Yan Liu, PhD, MPH, Michael Sanderson, MS, Aldo Crossa, MSc, L. Hannah Gould, PhD, MBA, Sungwoo Lim, DrPH, MS

Presenting author's affiliation: CDC and NYC DOHMH

## Special Populations

31. "Housing Needs of Individuals with Autism Spectrum Disorder and their Families Living in Philadelphia"

**Paul Turcotte, MPH**, Lindsay Shea, DrPH, MS, Mimi Wong, LCSW, Kate Verstrete, MPH  
Presenting author's affiliation: AJ Drexel Autism Institute

32. "Community Needs of Individuals with Autism Spectrum Disorder and their Families Living in Philadelphia"

**Mimi Wong, LCSW**, Lindsay Shea, DrPH, MS, Paul Turcotte, MPH, Derek Green, JD  
Presenting author's affiliation: AJ Drexel Autism Institute

33. "Scaling of drug fatalities in the United States"

**Pricila Mullachery, PhD, MPH**, Usama Bilal, MD, PhD, MPH  
Presenting author's affiliation: Urban Health Collaborative, Dornsife School of Public Health

34. "Anything Could Happen" How Perceived HIV Risk Influences PrEP Initiation Among Women Who Inject Drugs in Philadelphia"

**Eliza Ziegler, BA**, Marisa Felsher, MPH, PhD(c), Jade McKnight, MPH, Alexis Roth, PhD, MPH  
Presenting author's affiliation: Dornsife School of Public Health

35. "Towards Understanding Pre-Exposure Prophylaxis Adherence among Women who Inject Drugs"

**Bolutife Odeniyi, BS**, Brogan Piecara, MPH, Marisa Felsher, PhD, MPH, Rachel Fox, PA, Alexis Roth, PhD, MPH  
Presenting author's affiliation: Dornsife School of Public Health

36. "Ongoing Pilot Study on the Use of Doxycycline as Prophylaxis for Syphilis in HIV-Infected Men Who Have Sex With Men"

**Heather Conway, BS**, Zsofia Szep, MD, Shara Epstein, MD, Michele Kutzler, PhD, Edward Gracely, PhD, Margaret O'Connor, MS, MD/PhD student, Nguyen K. Tran, MPH, PhD(c), Seth Welles, ScD, PhD  
Presenting author's affiliation: Drexel University College of Medicine

37. "Qualitative Assessment to Understand the Knowledge Associated with Hepatitis B Among Vietnamese Nail Salon Workers in Southern New Jersey and Philadelphia, PA"

**Catherine Freeland, MPH**, Nga Vu, Tracy Nguyen, Nancy Nguyen, Chari Cohen, DrPH, MPH, Tran Huynh, PhD, MPH, CIH  
Presenting author's affiliation: Hepatitis B Foundation

38. "Prevalence and Awareness of Chronic Kidney Disease New York City Adults, 2013-14"

**Sharon Perlman, MPH**, Linda Wong, MD, MPH, Claudia Chernov, MPH, Sumit Mohan, MD, MPH, Lorna Thorpe, PhD  
Presenting author's affiliation: New York City Department of Health and Mental Hygiene

39. Ruwais UN-Planned: A Public Health and Territorial Intervention"

**Faris Abuzeid, BArch, MSc**  
Presenting author's affiliation: Faris Abuzeid + Associates (FA+A)

## Innovative Research Methodology

40. "City-level measures of health, health determinants, and equity to foster population health improvement: the City Health Dashboard"

**Miriam Gofine, MPH**, Shoshanna Levine, DrPH, Lorna Thorpe, PhD, Benjamin Spoer, PhD, Marc Gourevitch, MD, MPH  
Presenting author's affiliation: City Health Dashboard, NYU School of Medicine, Department of Population Health

41. "Comparing Health and Social Outcomes Among US Peer Cities Using Cluster Analysis"

**Justin Feldman, ScD**, Lorna Thorpe, PhD, Benjamin Spoer, PhD, Shoshanna Levine, DrPH, Marc Gourevitch, MD, MPH  
Presenting author's affiliation: NYU School of Medicine

42. "Improving Sampling Probability Definitions with Predictive Algorithms"

**Matthew Jannetti, MSPPM**, Amy Carroll-Scott, PhD, MPH, Erika Gilliam, MS, MPH, Irene Headen, PhD, MS, Félice Lê-Scherban, PhD, MPH, Maggie Beverly, MPH, Samantha Joseph, MPH  
Presenting author's affiliation: Urban Health Collaborative, Dornsife School of Public Health

43. "Spatial Statistical Methods to Assess the Relationship Between Water Violations and Poverty at the County Level: In America, Who has Access to Clean Water?"

**Ruby Bayliss, BS**, Loni Tabb, PhD  
Presenting author's affiliation: Dornsife School of Public Health

44. "Spatiotemporal analysis of overall health in the United States between 2010-2018 using Bayesian methods"

**Binod Acharya, MS**, Loni Tabb, PhD  
Presenting author's affiliation: Urban Health Collaborative, Dornsife School of Public Health

45. "Split and combine SIMEX algorithm to correct geocoding coarsening of built environment exposures"

**Jung Yeon Won, MS**, Brisa N. Sánchez, PhD  
Presenting author's affiliation: University of Michigan

46. "A causal model to estimate the effect of distance-weighted built environment exposures from longitudinal data"

**Adam Peterson, MS**, Brisa Sanchez, PhD  
Presenting author's affiliation: University of Michigan

47. "Understanding geographic disparities in cancer mortality: Does selection of neighborhood deprivation index matter?"

**Daniel Wiese, PSM**, Shannon Lynch, PhD, Kevin Henry, PhD, Kari Moore, MS, Yuzhe Zhao, Ana Diez Roux, MD, PhD, MPH  
Presenting author's affiliation: Temple University, Geography Department

48. "Network Analysis of Latino-Serving Organizations in Philadelphia to Promote Immigrant Health in Urban Settings"

**Nishita Souza, MPH**, Elizabeth Hassrick, PhD, Kristin Giordano, MPH, Chris Friedman, BA  
Presenting author's affiliation: Dornsife School of Public Health



## GETTING AROUND PHILADELPHIA

Despite its population and amenities, Philadelphia is actually a fairly small city, with most of it being accessible through walking, biking, and public transportation.

### On Foot

Drexel University's convenient location offers visitors the opportunity to take advantage of Philadelphia's many arts, history and cultural attractions. Our University City location is within walking distance of some of Philadelphia's most interesting neighborhoods, including West Philadelphia, Center City, Rittenhouse Square, and more. To learn about our City of Neighborhoods, visit: [drexel.edu/difference/city-living/city-neighborhoods](http://drexel.edu/difference/city-living/city-neighborhoods).

### By Bike

Indego Philly Bike Share offers visitors the opportunity to rent bicycles from 100 stations located around the city. The city-wide bike share service starts at \$12 for a day pass and allows users to return their bike rental to the nearest station after their ride is complete.

### On Public Transit

The Southeastern Pennsylvania Transportation Authority (SEPTA) offers a vast network of bus, subway, and trolley commuter services will get you anywhere you need to go — or at least very close. The fare is \$2.50 in cash around the city or you can purchase a day pass, valid for 8 rides on any bus, trolley, or subway for one person, available for \$9 at some SEPTA stops and at some stores.

### Taxis and More

Philadelphia offers taxis, Uber and Lyft as a convenient and easy way to navigate the city.



Information compiled from [VisitPhilly.com](http://VisitPhilly.com) and Drexel University.  
Map from the National Railroad Passengers Corporation (AMTRAK).

## SPECIAL THANKS

### Scientific Planning Committee

Usama Bilal, Jerald Fagliano, Brent Langellier, Ana Martinez-Donate, Diana Nicholas, Gina Lovasi, Ana V. Diez Roux

### Poster Review Committee

Jody Bayer, Amie Devlin, Rennie Joshi, Pricila Mullachery, and Vaishnavi Vaidya

### Organizing Committee

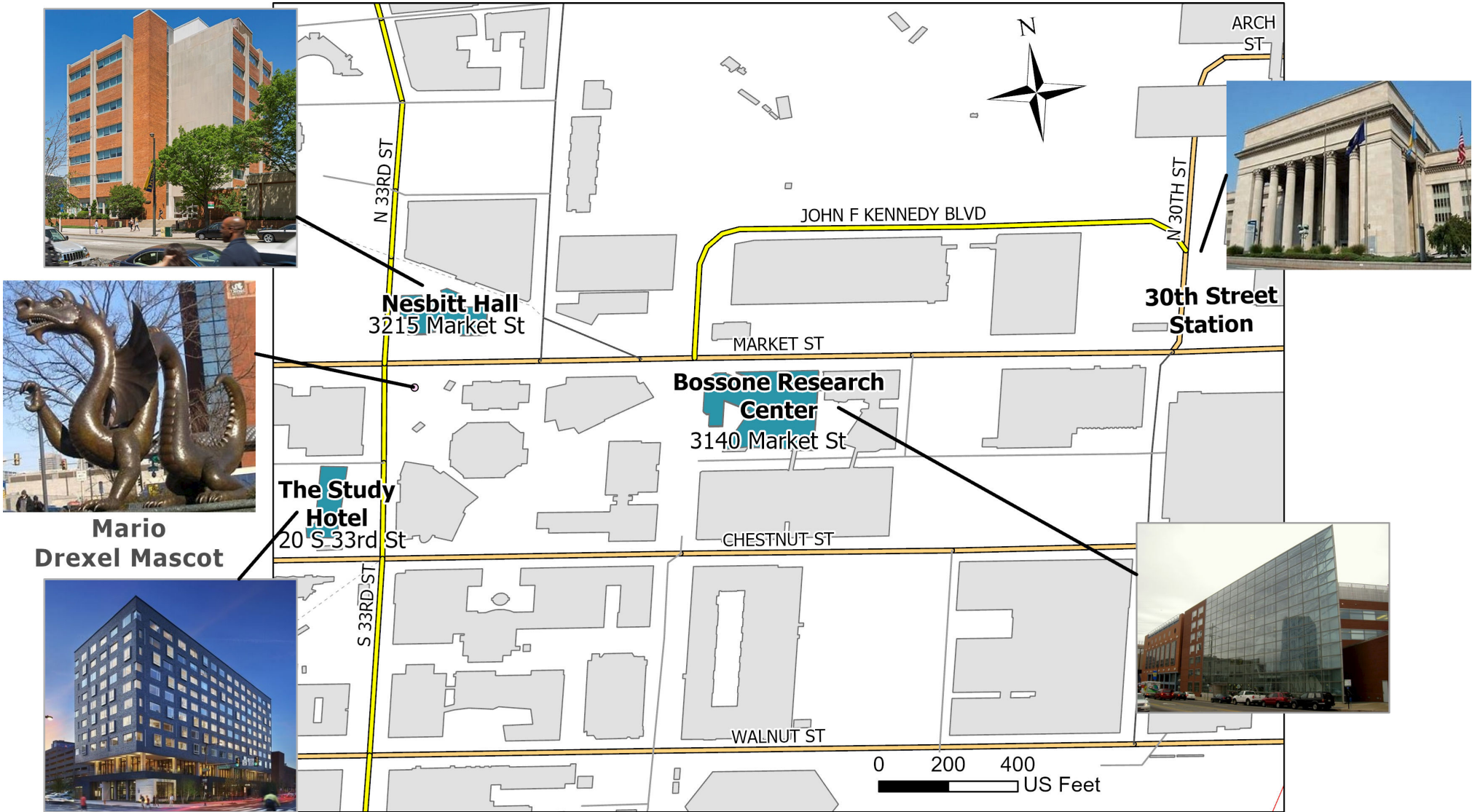
Tanisha Barnes, Autumn Ciarrocchi, Amy Confair, Rachel Cuffeld-Gaymon, Sarah Greer, Tais Idi-Infante, Katie Livengood

### Volunteers

Thank you to all of our volunteers from the Dornsife School of Public Health community, and to our collaborators and those who provided support for this symposium.

**A special thanks to Dana and David Dornsife for their generosity, vision, and enthusiasm in working with us to improve health in cities all over the world.**

*By entering the event premises, you consent to photography, audio recording, video recording and its/their release, publication, exhibition, or reproduction to be used for news, web casts, promotional purposes, advertising, inclusion on websites, social media, or any other purpose by Drexel Urban Health Collaborative and Dornsife School of Public Health at Drexel University.*



Philadelphia, PA  
 Sept. 5-6, 2019

#HealthInCities

# REIMAGINING HEALTH IN CITIES: CHALLENGES and NEW DIRECTIONS



A symposium hosted by the Drexel Urban Health Collaborative at the Dornsife School of Public Health.





# THE 2019 URBAN HEALTH SYMPOSIUM IS HOSTED BY THE DREXEL UNIVERSITY DORNSIFE SCHOOL OF PUBLIC HEALTH

Founded in 1996 on the principles of health as a human right and the importance of social justice to health, the Drexel University Dornsife School of Public Health is committed to improving population health and promoting health equity by generating rigorous evidence and transforming that evidence into actions. The School has a special emphasis on improving health in cities, eliminating health disparities and promoting health in all policies. Located at the heart of University City in Philadelphia and linked to a diverse set of local and global partners, the School offers bachelor's, master's and doctoral degrees in all areas of public health. In 2015, the School was named the Dana and David Dornsife School of Public Health in honor of a transformative gift from the philanthropic couple. Through this generous gift, and under the leadership of Dean Ana Diez Roux, MD, PhD, MPH, the School established the pioneering Urban Health Collaborative, strengthening Drexel's commitment to urban health and empowering the school to make a difference in the health of cities, locally and globally.

## ABOUT THE DREXEL URBAN HEALTH COLLABORATIVE

The mission of the Drexel Urban Health Collaborative is to improve health in cities by increasing scientific knowledge and public awareness of urban health challenges and opportunities, and by identifying and promoting actions and policies that improve population health and reduce health inequities.

## GET CONNECTED

Select DrexelGuest from the list of available wireless networks. Open a browser and type in <http://drexelguest.drexel.edu>. Follow the instructions from there by providing your email address.

## JOIN THE CONVERSATION

Follow @DrexelUHC on Twitter and include #HealthInCities in your social media posts throughout the symposium.

Questions? Email us at [uhc@drexel.edu](mailto:uhc@drexel.edu)



DREXEL UNIVERSITY  
**Urban Health  
Collaborative**

*Dornsife School of Public Health*

[drexel.edu/uhc](http://drexel.edu/uhc)  
3600 Market St, 7th Floor  
Philadelphia, PA 19104